

There are so many flowers blooming  
in the springtime in Tamura♪

## Lone Cherry Trees Guide

In fact, Tamura is a town of cherry blossoms well known by those in the know. We have selected some of the best lone cherry blossoms from among those designated as Tamura's 88 scenic spots with cherry trees, including magnificent and beautiful ones that are several hundred years old and famous cherry trees designated as natural treasures.



### Cherry tree in Ozawa

◆ 58-2, Aza-domae, Funeiki, Funehiki-machi, Tamura

The lone cherry tree blooming in the tranquil rural landscape, Someiyoshino cherry tree, is about 100 years old. The place with the cherry tree was also used as a location for a movie. The contrast to the color of rape blossoms and the appearance with the shrine leads us to nostalgia.



### Weeping cherry tree at Jokoji Temple

◆ 29, Aza-jokoji, Tokiwa, Tokiwa-machi, Tamura

Shidare-zakura (weeping cherry) at Jokoji Temple is located not far from the center of Tokiwa Town. Standing proudly in front of the main hall of the temple, the tree welcomes the visitors who climbed the stone steps.



### Cherry tree at Eisenji Temple

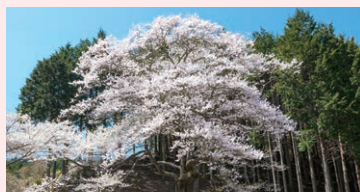
◆ 93-1 Aza-nagane, Kuride, Ogoe-machi, Tamura

Considered the sister tree of Miharu Takizakura, this weeping cherry tree is about 400 years old. Presence of 4m trunk circumference and 13.3m height is breathtaking, and the illuminated nighttime cherry blossoms are also well worth seeing.

### Cherry tree in Asemizawa

◆ 341 Aza Asemizawa, Iwaisawa, Miyakoji-machi, Tamura

Overcoming the crisis of being cut down, this tree has been cherished by the local people. The blooming of these cherry blossoms were used as a seasonal guide for starting farm work of the year, so it has been also called "sowing cherry tree".



### Benten cherry tree

◆ 199 Nanamagari, Sugaya, Takine-machi, Tamura

There is a legend about this tree "The parents planted the tree as a memorial to their daughter who lost her life when she could not return home from her marriage." It is characterized by its fragile beauty and is designated as one of Takine's three most weeping cherry trees.



## Tamura city Excursion Pamphlet

With guides with a  
three-star rating system♪

For other  
tourist information,  
scan this!



[Issued by] Tamura City Municipal Government, Fukushima

[For further information, please contact]

Tamura City Tourism Exchange Division, Industry Department TEL.0247-81-2136

Issued in January, 2025; Photo location: Isosaki Shrine

## Guide to recommendations in Tamura City

Here are exquisite menus to visit from afar and local delicacies loved by locals. We introduce you to a three-star gourmet restaurants that you should definitely stop by when you come to Tamura♪

### 01 La Luce Pasta Restaurant

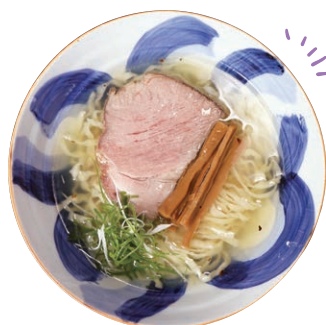
It is a popular western-style restaurant where you can enjoy hot doria, authentic pasta, and more. The restaurant is famous for its many fans, ranging from the single visitors to families.

◆ 0247-61-6623 ◆ 202-1 Aza-genjiro, Funeiki, Funehiki-machi, Tamura ◆ Open / 11:00 a.m.~3:00 p.m., 5:00 p.m.~9:00 p.m. ◆ Closed / Tuesdays ◆ Parking / 15 cars

### 02 SANKURUGE

This popular restaurant has had a long line of customers since it opened in 2019. Salt Ramen with a delicate broth infused with deep flavor is a delicious dish that you should try at least once.

◆ 0247-78-2552 ◆ 52 Aza Bontengawa, Kammata, Takine-machi, Tamura ◆ Open / 7:00 a.m.~ noon ※ Open only when soup is available. ◆ Closed / Saturdays, Sundays and national holidays ◆ Parking / 5 cars (free parking also available nearby)



Degree of  
Congestion  
★★★

### 03 Nikoniko Bakery

This bakery is the heart and soul of the taste of Tamura citizens, who also distributes bread to schools for lunches and local supermarkets. They have aromatic hand-baked rice crackers filled with peanuts. There is also a selection of sweets to take home as souvenirs.

◆ 0247-79-2216 ◆ 52 Aza Motoike, Kami-Ogoe, Ogoe-machi, Tamura ◆ Open / 8:00 a.m.~5:00 p.m. ◆ Closed / Sundays ◆ Parking / 3 cars



### 04 Confectionery Tamanoya

The restaurant's motto is to focus on local ingredients. Their sweets inspired by Tamura and Funeiki are also popular.

◆ 0247-82-0227 ◆ 116-1 Hatazoe, Funeiki, Funehiki-machi, Tamura ◆ Open / 8:00 a.m.~6:00 p.m. ◆ Closed / Every 1st and 3rd Sunday ◆ Parking / 1 car



Local  
favorite  
★★★

### 05 JA Fukushima Sakura Agricultural Products Direct Sales Shop FA-SEL Tamura

This is a pizza restaurant run by the direct sales shop. Every pizza is made to order when they have the orders. Their mixed pizza with lots of vegetables is the most popular♪

◆ 0247-82-4800 ◆ 143 Aza-Tomote, Funeiki, Funehiki-machi, Tamura ◆ Open / 10:00 a.m.~4:00 p.m. ◆ Closed / Every 1st Wednesday ◆ Parking / 120 cars, 2 buses



Best seasonal  
offerings  
★★★

### 07 Ohgiya Japanese and Western Confectionery Shop

The texture and flavor of the famous abura-manjus\* (fried manjus) which are carefully deep-fried one by one, and their sweet bean paste are addictive and delicious.

◆ 0247-77-2003 ◆ 52 Aza Kamimachi, Tokiwa, Tokiwa-machi, Tamura ◆ Open / 8:30 a.m.~6:30 p.m. ◆ Closed / Sundays ◆ Parking / 2 cars



Local  
offering  
★★★

### 06 Chinese Restaurant Ryumei

A local Chinese restaurant that is popular with people of all ages. The oilseed perilla tantanmen noodle with a deep flavor is excellent.

◆ 0247-82-4685 ◆ 3-65 Tobudai, Funeiki-machi, Tamura ◆ Open / 11:15 a.m.~2:00 p.m., 5:00 p.m.~9:00 p.m. ◆ Closed / Wednesdays and every 3rd Thursday ◆ Parking / 20 cars



Degree of  
professionalism  
★★★

### 08 Yoriai Dokoro Hana

Restaurant in a 150-year-old renovated private house. Your heart and body will definitely be warmed by eating their local cuisine for their special lunch with a variety of dishes such as rice and kenchin-jiru (meat and vegetable miso soup) with many ingredients.

◆ 080-8203-8787 ◆ 67 Aza-shinmachi, Furumichi, Miyakoji-machi, Tamura ◆ Open / 11:00 a.m.~ ◆ Closed / Tuesdays, Thursdays, Saturdays, Sundays, and national holidays ◆ Parking / 8 cars



Degree of  
nostalgia  
★★★

Well known  
brand  
quality  
★★★

### 09 Miyakoji sweets Yui

The superb pudding made from "Miyakoji eggs", a brand-name ingredient, is a delicacy that can only be found here.

◆ 0247-73-8380 ◆ 65-1, Aza-donouchi, Iwaisawa, Miyakoji-machi, Tamura ◆ Open / 9:00 a.m.~5:30 p.m. ※ Shortened hours may be applied ◆ Closed / Wednesdays ◆ Parking / 10 cars



Degree of  
temptation  
★★★

### 10 Genba Honten

This historical brewery, which won a gold medal at the National New Brew of Sake Competition in 2024, has been around since the Edo era.

◆ 0247-82-0030 ◆ 41 Aza-kitamachidori, Funeiki, Funehiki-machi, Tamura ◆ Open / 10:00 a.m.~5:30 p.m. Saturdays 1:00 p.m.~5:30 p.m. ◆ Closed / Sundays, national holidays ◆ Parking / 5 cars

