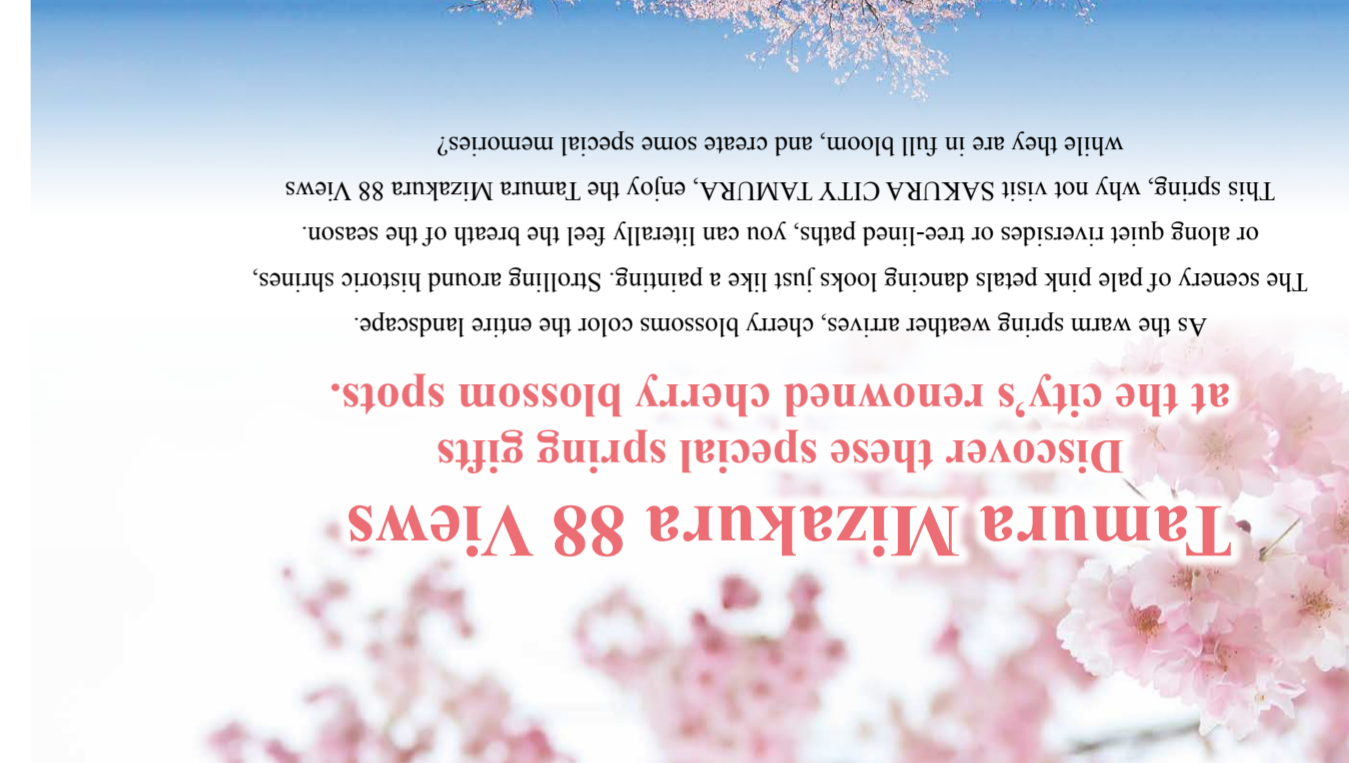




**Tamura Mizakura 88 Views**  
 Discover these special spring gifts  
 at the city's renowned cherry blossom spots.

As the warm spring weather arrives, cherry blossoms color the entire landscape. The scenery of pale pink petals dancing looks just like a painting. Strolling around historic shrines, or along quiet riversides or tree-lined paths, you can literally feel the breath of the season. While they are in full bloom, and create some special memories?



### Dynamic Course

for Enjoying Majestic Scenery

- 160 Denjo, Tokiwamachi Yamane**  
The observation bath, located in a prime spot close to the sky, allows bathers to relax and while enjoying views of the surrounding scenery as it changes through the four seasons. The bath tub incorporates natural black silica stones.
- 29 Jokoji, Tokiwamachi Tokiwa**  
From the Jokoji you stop on National Route 288, turn onto the narrow road and you will see Jokoji Temple on the left. Climb the stone steps from the approach path, and you will be greeted by a weeping cherry tree in front of the main hall.
- 160 Denjo, Tokiwamachi Yamane**  
The observation bath, located in a prime spot close to the sky, allows bathers to relax and while enjoying views of the surrounding scenery as it changes through the four seasons. The bath tub incorporates natural black silica stones.
- 160 Denjo, Tokiwamachi Yamane**  
The observation bath, located in a prime spot close to the sky, allows bathers to relax and while enjoying views of the surrounding scenery as it changes through the four seasons. The bath tub incorporates natural black silica stones.
- 160 Denjo, Tokiwamachi Yamane**  
The observation bath, located in a prime spot close to the sky, allows bathers to relax and while enjoying views of the surrounding scenery as it changes through the four seasons. The bath tub incorporates natural black silica stones.

### Mizakura Course

for Enjoying Tamura's Five Great Cherry Trees

- 424 Tateishi, Funehikimachi Sasayama**  
This weeping cherry tree is said to be a descendant of the famous Miharu Takizakura and its appearance is truly spectacular. Viewed from the road below, the cherry blossoms in full bloom are a magnificent sight. The name Teppen (a local variation of "Teppen," meaning "top") comes from the tree being located on high ground.
- 58-2 Do-mae, Funehikimachi Funehiki**  
A solitary Somei-Yoshino cherry tree, about a century old, blooms in a field along National Route 349. When in full bloom, it forms a beautiful contrast with the rapeseed flowers, which has led to its being used as a movie filming location. At its base, there is a small stone shrine and a field Buddha statue, and in the distance, you can see Mt. Utsushigatake.
- 230 Takayashiki, Ogoemachi Shimo-Ogoe**  
These cherry trees were planted in the area around what is said to have once been Asagiri Castle, as part of an environmental improvement project with the aim of allowing local residents to enjoy cherry blossom viewing.
- 93-1 Nagane, Ogoemachi Kuride**  
This red weeping cherry tree (beni-shidare-zakura), estimated to be about 400 years old, stands in the grounds of Eisenji Temple. It is said to be a sister tree to the Miharu Takizakura, one of Japan's Three Great Weeping Cherry Trees, and is designated as a Natural Monument of Fukushima Prefecture. It reaches its peak bloom around mid April, when it is illuminated after sunset.
- 141 Nakasaku, Miyakojimachi Iwasawa**  
These cherry trees have faced the threat of being cut down several times but they have survived thanks to the protection of local residents. They are affectionately known as the seed-sowing cherry trees because local farmers traditionally began their spring fieldwork when their blossoms appeared.

### Access

For visitors traveling from major cities

- From Sendai to Tamura**  
By car: Approximately 2 hours via the Tohoku Expressway and Ban-etsu Expressway
- By train: Approximately 1 hour 30 minutes via the JR Tohoku Shinkansen and Ban-etsu East Line
- From Tokyo to Tamura**  
By car: Approximately 3 hours 30 minutes via the Tohoku Expressway and Ban-etsu Expressway
- By train: Approximately 1 hour 45 minutes via the JR Tohoku Shinkansen and Ban-etsu East Line

Tamura City Public Transportation Map  
 Check here for public transportation information for getting around Tamura City.

### By Plane

Fukushima Airport → Tamura City Hall (Approximately 1 hour)

### By Car

Koriyama JCT → Tamura Smart IC (Approximately 20 minutes)

**Tamura City**  
 Tamura City Industrial Department Tourism Exchange Section  
 76-2 Hatazoe, Funehikimachi Funehiki, Tamura City, Fukushima Prefecture  
 TEL.0247-81-2136 Published March 2025

### Culture Course

for Experiencing Tamura's Culture

- 1 Bentenzakura Cherry Tree**  
199 Nanamagari, Takinemachi Sugaya  
A small stone shrine stands at the base of the cherry tree. According to legend, the tree was planted as a memorial by the parents of a daughter who, despairing that she would never be allowed to return to her birthplace after marriage, threw herself into a nearby pond. It is one of the Three Great Weeping Cherry Trees of Takine.
- 2 Eisenji Temple Cherry Tree**  
93-1 Nagane, Ogoemachi Kuride  
This red weeping cherry tree (beni-shidare-zakura), estimated to be about 400 years old, stands in the grounds of Eisenji Temple. It is said to be a sister tree to the Miharu Takizakura, one of Japan's Three Great Weeping Cherry Trees, and is designated as a Natural Monument of Fukushima Prefecture. It reaches its peak bloom around mid April, when it is illuminated after sunset.
- 3 Doyama Oji Shrine Weeping Cherry Tree**  
171-1 Doyama, Funehikimachi Kadosawa  
This shrine preserves the architectural style of the mid-Muromachi period. Its main hall has been designated as a National Important Cultural Property. The cherry tree beside the stone steps at the entrance blooms spectacularly, its branches arching over the road.
- 4 Horikoshi O-Ningyo Sama**  
Myojin-mae area, Funehikimachi Horikoshi  
In 1992, this figure was restored to its original place within the grounds of Akashi Shrine, marking its return after 87 years since 1907. The face, carved from a single piece of zelkova wood using the itto-bori technique, is said to have been made during the Edo period.
- 5 Honokibashi O-Ningyo Sama**  
Meijo area, Funehikimachi Ashizawa  
This figure stands as if it is overlooking the Iwaki Highway. The current mask features a small, refined face with a neat mouth.
- 6 Yakata O-Ningyo Sama**  
Shimo-Yakata area, Funehikimachi Ashizawa  
This O-ningyo sama figure is enshrined in a park in the Yakata district. It has a long history, as evidenced by the "1808" inscription on the face of the previous version of the figure.

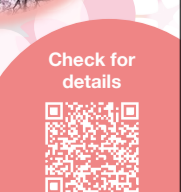
### Full Enjoyment Course

for Enjoying Tamura From North to South

- 1 Kosoji Temple Weeping Cherry Tree**  
49 Ichinotsubo, Takinemachi Kanmata  
More than 400 years old, this weeping cherry tree is known as a melancholic cherry that blooms vigorously despite its advanced age. At the entrance to the main approach, visitors to the temple are greeted by a cluster of Somei-Yoshino and red weeping cherry trees. This particular tree is one of the Three Great Weeping Cherry Trees of Takine.
- 2 Abukuma Cave**  
1 Higashi-Kamayama, Takinemachi Sugaya  
A huge limestone cave formed over millions of years, the Abukuma Cave includes a publicly accessible section about 600 meters long. In the largest chamber, called Takine Gotoen (Takine Hall), which is about 30 meters high, you can marvel at rare stalactites. Another of the cave's attractions is that it can be enjoyed year-round.
- 3 Zesaiji Temple Jizozakura Cherry Tree**  
370-2 Zesaiji-mae, Funehikimachi Ashizawa  
This nostalgic scene features cherry blossoms standing in a traditional satoyama (rural area between mountains and villages) landscape. Located about 2 km west along the prefectural road from the Ozawa Cherry Tree toward Miharu, the vibrant pale pink blossoms stand out strikingly against the backdrop of fields and paddies before the surrounding scenery turns colorful.
- 4 Ozawa Cherry Tree**  
58-2 Do-mae, Funehikimachi Funehiki  
A solitary Somei-Yoshino cherry tree, about a century old, blooms in a field along National Route 349. When in full bloom, it forms a beautiful contrast with the rapeseed flowers, which has led to its being used as a movie filming location. At its base, there is a small shrine and a field Buddha statue, and in the distance, you can see Mt. Utsushigatake.
- 5 FASEL Tamura JA Fukushima Sakura**  
143 Toomote, Funehikimachi Funehiki  
You'll find an extensive selection of fresh local vegetables and processed goods at this direct sales store. Popular items include freshly made homemade pizza, gelato, as well as tofu and fried tofu made from locally grown soybeans. There is also a wide variety of ready-to-eat foods prepared using locally grown vegetables.

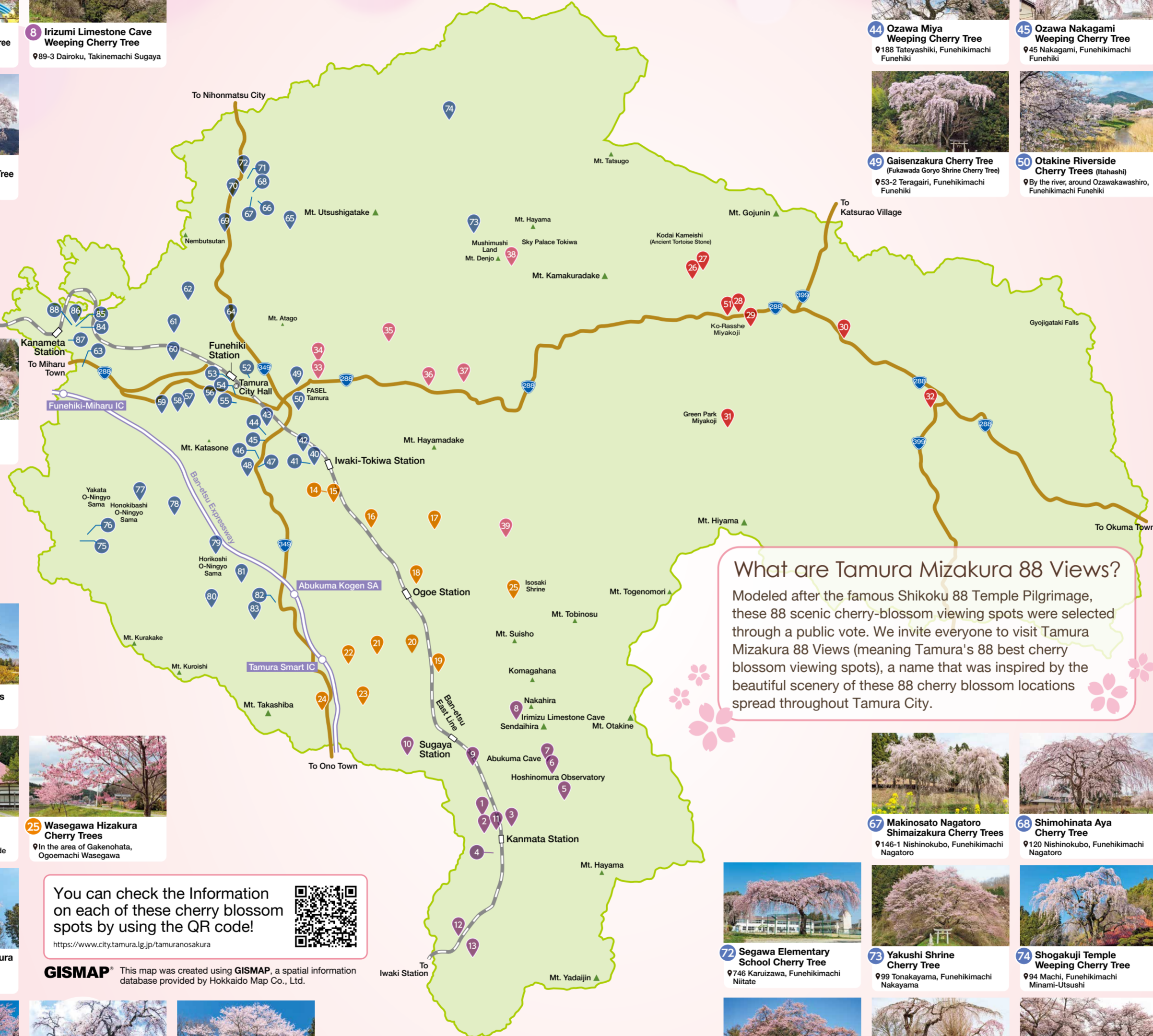
# Tamura Mizakura 88 Views Guide Map

Experience the hospitality of SAKURA CITY TAMURA.



# Swept along by the spring breezes, let's journey across fields and mountains to explore Tamura Mizakura 88 Views.

- 1** Kosoji Temple Weeping Cherry Tree  
949 Ichinotsubo, Takinemachi Kanmata
- 2** Former Takine Elementary School Cherry Trees  
9218 Machi, Takinemachi Kanmata
- 3** Orai Shrine Weeping Cherry Tree  
9291-1 Kinoshita, Takinemachi Kanmata
- 4** Sekiba Cherry Tree  
9122 Sekiba, Takinemachi Kanmata
- 5** Gorogaikae Sanso Chery Tree  
921-3 Goroyama, Takinemachi Kanmata
- 6** Hoshinomura Observatory Uchu Kibo Cherry Tree  
960-1 Nukatsuka, Takinemachi Kanmata
- 7** Abukuma Cave Double-Flowered Cherry Tree  
91 Higashi-Kamayama, Takinemachi Sugaya
- 8** Irizumi Limestone Cave Weeping Cherry Tree  
989-3 Dairoku, Takinemachi Sugaya
- 9** Sugaya Hirakiuchi Cherry Trees  
942 Hirakiuchi, Takinemachi Sugaya
- 10** Bentenzakura Cherry Tree  
9199 Nanamagari, Takinemachi Sugaya
- 11** Kashima Shrine Tanemakisakura Cherry Tree  
9156-1 Machi, Takinemachi Kanmata
- 12** Ryuzoji Temple Cherry Tree  
91-1 Hebluchi, Takinemachi Hirose
- 13** Hirose Rural Plaza Cherry Trees  
946 Amagatsutsumi, Takinemachi Hirose
- 14** Nakahara Shimaizakura Cherry Trees  
9118 Nakahara, Ogoemachi Shimo-Ogoe
- 15** Nakahara Tanemakizakura Cherry Tree  
989-1 Nakahara, Ogoemachi Shimo-Ogoe
- 16** Asagiri Castle Cherry Trees  
9230 Takayashiki, Ogoemachi Shimo-Ogoe
- 17** Hojuen Cherry Trees  
9339 Irinosaku, Ogoemachi Shimo-Ogoe
- 18** Osadachi Community Center Cherry Tree  
965 Osadachi, Ogoemachi Kami-Ogoe
- 19** Magata Cherry Tree  
9125-1 Magata, Ogoemachi Kami-Ogoe
- 20** Furuuchitatenno Cherry Tree  
959 Furuuchitatenno, Ogoemachi Kami-Ogoe
- 21** Yakushido Cherry Trees  
932 Myobugafuchi, Ogoemachi Kami-Ogoe
- 22** Coretec Co., Ltd. 100 Cherry Trees  
933-1 Fukaya, Ogoemachi Magino
- 23** Jurouchi Cherry Tree  
9139-2 Jurouchi, Ogoemachi Kuride
- 24** Eisenji Temple Cherry Tree  
993-1 Nagane, Ogoemachi Kuride
- 25** Wasegawa Hizakura Cherry Trees  
9In the area of Gakenohata, Ogoemachi Wasegawa
- 26** Asemizawa Cherry Tree  
9341 Asemizawa, Miyakojimachi Iwasawa
- 27** Kowanashi Cherry Trees  
9In the area of Asemizawa, Miyakojimachi Iwasawa
- 28** Nakasaku Tanemakizakura Cherry Tree  
9169 Nakasaku, Miyakojimachi Iwasawa
- 29** Former Miyaji Junior High School (Iwabayama) Yamazakura Cherry Trees  
948-2 Shimoda, Miyakojimachi Iwasawa
- 30** Inaba Cherry Tree  
9100-4 Donouchi, Miyakojimachi Iwasawa
- 31** Green Park Miyakoji Yamazakura Cherry Trees  
9185-1 Kitamuki, Miyakojimachi Iwasawa
- 32** Akimoto Weeping Cherry Tree  
934-2 Motomachi, Miyakojimachi Furumichi
- 33** Nakasaku Edohigan Cherry Tree  
991-3 Nakasaku, Miyakojimachi Iwasawa
- 34** Otakine Riverside Cherry Trees (Nishimuki)  
9By the river, in the Tokiwamachi Nishimuki area
- 35** Yasumiishi Cherry Trees  
982 Yasumiishi, Tokiwamachi Nishimuki
- 36** Jokuji Temple Weeping Cherry Tree  
929 Jokuji, Tokiwamachi Tokiwa
- 37** Tate Park Cherry Trees  
9104 Tate, Tokiwamachi Tokiwa
- 38** Denjojama Cherry Trees  
9160 Denjo, Tokiwamachi Yamane
- 39** Oisesama Abumisuriishi Cherry Tree  
943 Ipponmatsu, Tokiwamachi Wasegawa



**What are Tamura Mizakura 88 Views?**  
Modeled after the famous Shikoku 88 Temple Pilgrimage, these 88 scenic cherry-blossom viewing spots were selected through a public vote. We invite everyone to visit Tamura Mizakura 88 Views (meaning Tamura's 88 best cherry blossom viewing spots), a name that was inspired by the beautiful scenery of these 88 cherry blossom locations spread throughout Tamura City.

You can check the Information on each of these cherry blossom spots by using the QR code!  
<https://www.city.tamura.lg.jp/tamuranosakura>



**GISMAP** This map was created using GISMAP, a spatial information database provided by Hokkaido Map Co., Ltd.

- 40** Josenji Temple Cherry Tree  
9323 Horinouchi, Funehikimachi Imaizumi
- 41** Imaizumi Rural Park Cherry Trees  
9334-1 Horinouchi, Funehikimachi Imaizumi
- 42** Magino Riverside Cherry Trees  
9By the river, near 176 Imaizumimichi, Funehikimachi Imaizumi
- 43** Ozawa Fururantoba Weeping Cherry Tree  
9214 Kagayashiki, Funehikimachi Funehiki
- 44** Ozawa Miya Weeping Cherry Tree  
9188 Tateyashiki, Funehikimachi Funehiki
- 45** Ozawa Nakagami Weeping Cherry Tree  
945 Nakagami, Funehikimachi Funehiki
- 46** Ozawa Hakusan Weeping Cherry Tree  
9179-3 Hakusan, Funehikimachi Funehiki
- 47** Ozawa Cherry Tree  
958-2 Do-mae, Funehikimachi Funehiki
- 48** Ozawa Ohira Cherry Tree  
9179-1 Ohira, Funehikimachi Funehiki
- 49** Gaisenzakura Cherry Tree (Fukawada Goryo Shrine Cherry Tree)  
953-2 Teragairi, Funehikimachi Funehiki
- 50** Otakine Riverside Cherry Trees (Itahashi)  
9By the river, around Ozawakawashiro, Funehikimachi Funehiki
- 51** Tatemura Park Cherry Trees  
9123 Tate, Funehikimachi Funehiki
- 52** Funehiki Junior High School Cherry Trees  
92-1 Tobudai, Funehikimachi Funehiki
- 53** Mori Park Cherry Tree  
9141-3 Goshoguruma, Funehikimachi Funehiki
- 54** Otakine Riverside Cherry Trees (Shimosato-Kamimachi)  
9By the river, around Hatzaoe, Funehikimachi Funehiki
- 55** Tatemura Park Cherry Trees  
9123 Tate, Funehikimachi Funehiki
- 56** Gozenike Park Cherry Trees  
9166 Ishida, Funehikimachi Funehiki
- 57** Hiraseto Cherry Tree  
926-1 Hiraseto, Funehikimachi Funehiki
- 58** Himizu Cherry Tree  
9227-1 Shijouchi-mae, Funehikimachi Funehiki
- 59** Uenodai Riverside Cherry Trees  
9By the river, in Uenodai, Funehikimachi Haruyama
- 60** Manpukuji Temple Weeping Cherry Tree  
9190 Minami, Funehikimachi Monju
- 61** Former Ishimori Elementary School Cherry Trees  
9108 Tate, Funehikimachi Ishimori
- 62** Keichoji Temple Oyakozakura Cherry Trees  
963 Nakata, Funehikimachi Ishimori
- 63** Uezakura Cherry Tree  
9103 Uezakura, Funehikimachi Haruyama
- 64** Oyama Cherry Tree  
995-4 Kayanoshiri, Funehikimachi Kita-Kanomata
- 65** Yamada Cherry Tree  
97 Yamada, Funehikimachi Kita-Kanomata
- 66** Setonokubo Cherry Tree  
96 Setonokubo, Funehikimachi Nagatoro
- 67** Makinosato Nagatoro Shimaizakura Cherry Trees  
9146-1 Nishinokubo, Funehikimachi Nagatoro
- 68** Shimohinata Aya Cherry Trees  
9120 Nishinokubo, Funehikimachi Nagatoro
- 69** Jamoritsuka Weeping Cherry Tree  
990 Makunouchi, Funehikimachi Kadoshika
- 70** Segawa Okura Shrine Cherry Trees  
9208-3 Uwadai, Funehikimachi Okura
- 71** Segawa Area Riverside Cherry Trees  
9200-1 Karuzawa, Funehikimachi Niitate
- 72** Segawa Elementary School Cherry Tree  
9746 Karuzawa, Funehikimachi Niitate
- 73** Yakushi Shrine Cherry Tree  
999 Tonakayama, Funehikimachi Nakayama
- 74** Shogakuji Temple Weeping Cherry Tree  
994 Machi, Funehikimachi Minami-Utsushi
- 75** Yamada Tenzozakura Cherry Tree  
9136-2 Kami-Yamada, Funehikimachi Ashizawa
- 76** Kakesu Weeping Cherry Tree  
9111 Kakesu, Funehikimachi Ashizawa
- 77** Meijo Cherry Tree  
933 Meijo, Funehikimachi Ashizawa
- 78** Zesaiji Temple Jizozakura Cherry Tree  
9370-2 Zesaiji-mae, Funehikimachi Ashizawa
- 79** Funehiki Minami Elementary School Cherry Trees  
92 Marumori, Funehikimachi Horikoshi
- 80** Horikoshi Rural Park Cherry Trees  
9304 Kamino-mae, Funehikimachi Horikoshi
- 81** Daimon Cherry Trees  
997-1 Daimon, Funehikimachi Horikoshi
- 82** Nanago Kaizen Center Cherry Trees  
9117 Nitato, Funehikimachi Kadosawa
- 83** Doyama Oji Shrine Weeping Cherry Tree  
9171-1 Doyama, Funehikimachi Kadosawa
- 84** Nakamori Red Weeping Cherry Tree  
9111-1 Nakamori, Funehikimachi Sasayama
- 85** Kanameta Branch Office & Community Center Cherry Trees  
9604-1 Tateishi, Funehikimachi Sasayama
- 86** Tateishi Teppe Red Weeping Cherry Tree  
9424 Tateishi, Funehikimachi Sasayama
- 87** Tateishi Cherry Trees  
9586-1 Tateishi, Funehikimachi Sasayama
- 88** Daishoji Temple Red Weeping Cherry Tree  
913 Tateishi, Funehikimachi Sasayama