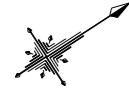


基準点成果表

基点	東	北	高さ
42-1	181564.146	88111.985	292.572
42-2	181564.146	88111.985	292.572
42-3	181564.146	88111.985	292.572
42-4	181564.146	88111.985	292.572
42-5	181564.146	88111.985	292.572
42-6	181564.146	88111.985	292.572
42-7	181564.146	88111.985	292.572
42-8	181564.146	88111.985	292.572
42-9	181564.146	88111.985	292.572
42-10	181564.146	88111.985	292.572
42-11	181564.146	88111.985	292.572
42-12	181564.146	88111.985	292.572
42-13	181564.146	88111.985	292.572
42-14	181564.146	88111.985	292.572
42-15	181564.146	88111.985	292.572
42-16	181564.146	88111.985	292.572
42-17	181564.146	88111.985	292.572
42-18	181564.146	88111.985	292.572
42-19	181564.146	88111.985	292.572
42-20	181564.146	88111.985	292.572
42-21	181564.146	88111.985	292.572
42-22	181564.146	88111.985	292.572
42-23	181564.146	88111.985	292.572
42-24	181564.146	88111.985	292.572
42-25	181564.146	88111.985	292.572
42-26	181564.146	88111.985	292.572
42-27	181564.146	88111.985	292.572
42-28	181564.146	88111.985	292.572
42-29	181564.146	88111.985	292.572
42-30	181564.146	88111.985	292.572
42-31	181564.146	88111.985	292.572
42-32	181564.146	88111.985	292.572
42-33	181564.146	88111.985	292.572
42-34	181564.146	88111.985	292.572
42-35	181564.146	88111.985	292.572
42-36	181564.146	88111.985	292.572
42-37	181564.146	88111.985	292.572
42-38	181564.146	88111.985	292.572
42-39	181564.146	88111.985	292.572
42-40	181564.146	88111.985	292.572

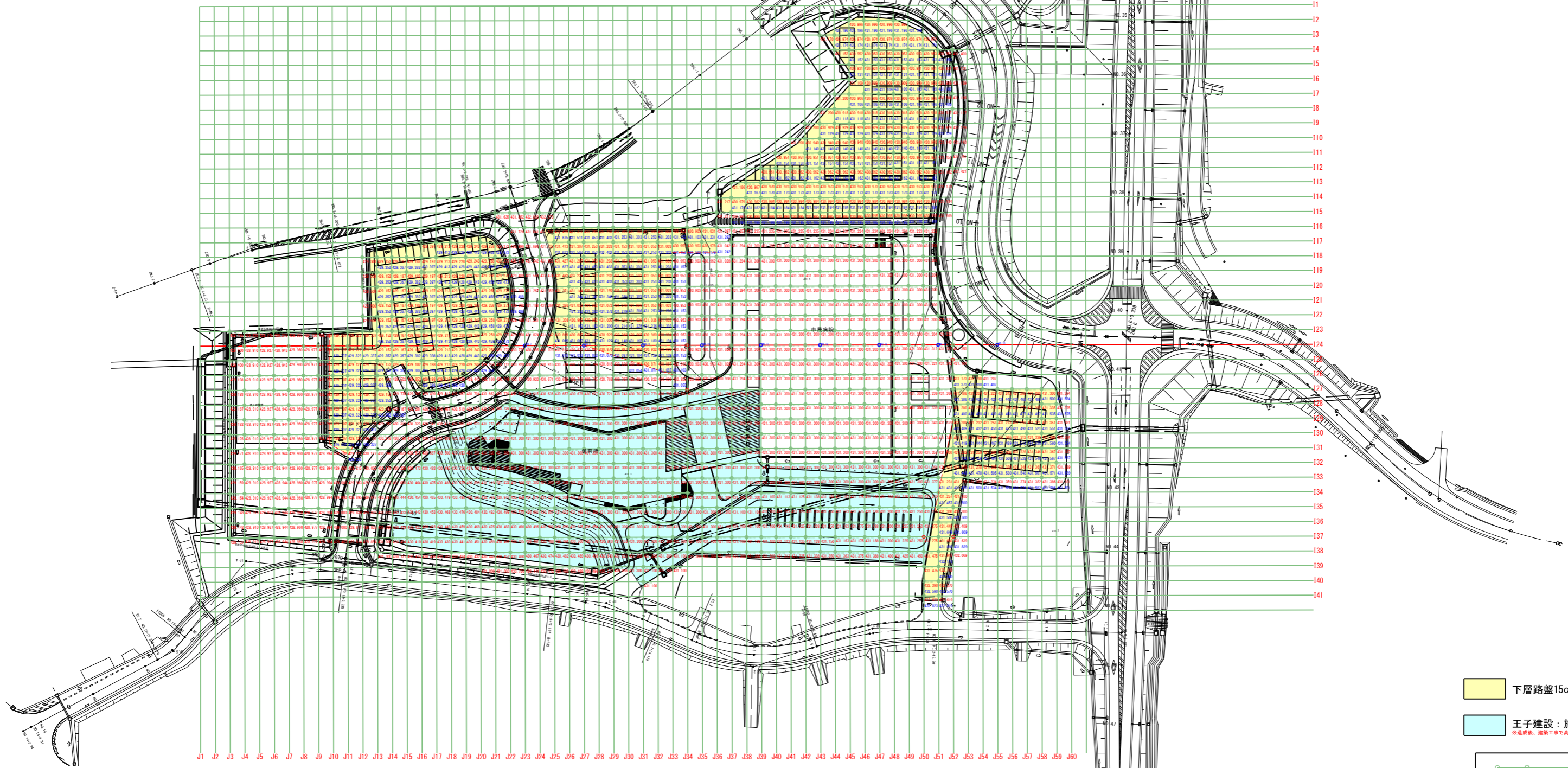


メッシュ点高図

S=1:500 (A0)

主要点成果表 (国運288号)

基点	東	北	高さ
42-1	181564.146	88111.985	292.572
42-2	181564.146	88111.985	292.572
42-3	181564.146	88111.985	292.572
42-4	181564.146	88111.985	292.572
42-5	181564.146	88111.985	292.572
42-6	181564.146	88111.985	292.572
42-7	181564.146	88111.985	292.572
42-8	181564.146	88111.985	292.572
42-9	181564.146	88111.985	292.572
42-10	181564.146	88111.985	292.572
42-11	181564.146	88111.985	292.572
42-12	181564.146	88111.985	292.572
42-13	181564.146	88111.985	292.572
42-14	181564.146	88111.985	292.572
42-15	181564.146	88111.985	292.572
42-16	181564.146	88111.985	292.572
42-17	181564.146	88111.985	292.572
42-18	181564.146	88111.985	292.572
42-19	181564.146	88111.985	292.572
42-20	181564.146	88111.985	292.572
42-21	181564.146	88111.985	292.572
42-22	181564.146	88111.985	292.572
42-23	181564.146	88111.985	292.572
42-24	181564.146	88111.985	292.572
42-25	181564.146	88111.985	292.572
42-26	181564.146	88111.985	292.572
42-27	181564.146	88111.985	292.572
42-28	181564.146	88111.985	292.572
42-29	181564.146	88111.985	292.572
42-30	181564.146	88111.985	292.572
42-31	181564.146	88111.985	292.572
42-32	181564.146	88111.985	292.572
42-33	181564.146	88111.985	292.572
42-34	181564.146	88111.985	292.572
42-35	181564.146	88111.985	292.572
42-36	181564.146	88111.985	292.572
42-37	181564.146	88111.985	292.572
42-38	181564.146	88111.985	292.572
42-39	181564.146	88111.985	292.572
42-40	181564.146	88111.985	292.572



下層路盤15cm完了

王子建設：施工部
※完成後、建設工事で高さが変わっている。

完成地盤
建設工事
路盤工事

※境界測地系 (測地成果2011)

令和	年度	工事番号	号
建設	清水地内造成	田村市船引町船引宇屋清水	地内
造成計画設計業務委託			
メッシュ点高図			
縮尺	1:500	図面番号	116 / 116
測量		主任	技術者
設計	株式会社 磯山建設設計社	監理	池上 清善 技術者
田村市役所			